



PREVOST PIPING SYSTEM



- | | | | | | | | | | | |
|---------|----|----|----|----|----|----|----|----|-----|-----|
| ∅
mm | 16 | 20 | 25 | 32 | 40 | 50 | 63 | 80 | 100 | 160 |
|---------|----|----|----|----|----|----|----|----|-----|-----|

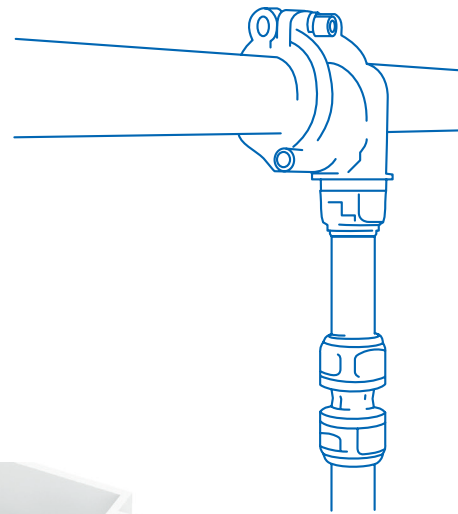
CONNECTED TO INNOVATION

What is a **compressed air system**?

A compressed air system moves energy throughout a network to power workstations and machinery.

Mount the ringmain of a Prevest 100% aluminium pipe system a minimum height of 2.5 m from the floor.

Install smaller diameter «downpipes» or «drops» off the main line to terminate at distribution points throughout the network approximately 1.2 m from the floor. From these points various accessories can be attached (manifolds, safety couplings, filtration, hoses, etc.).

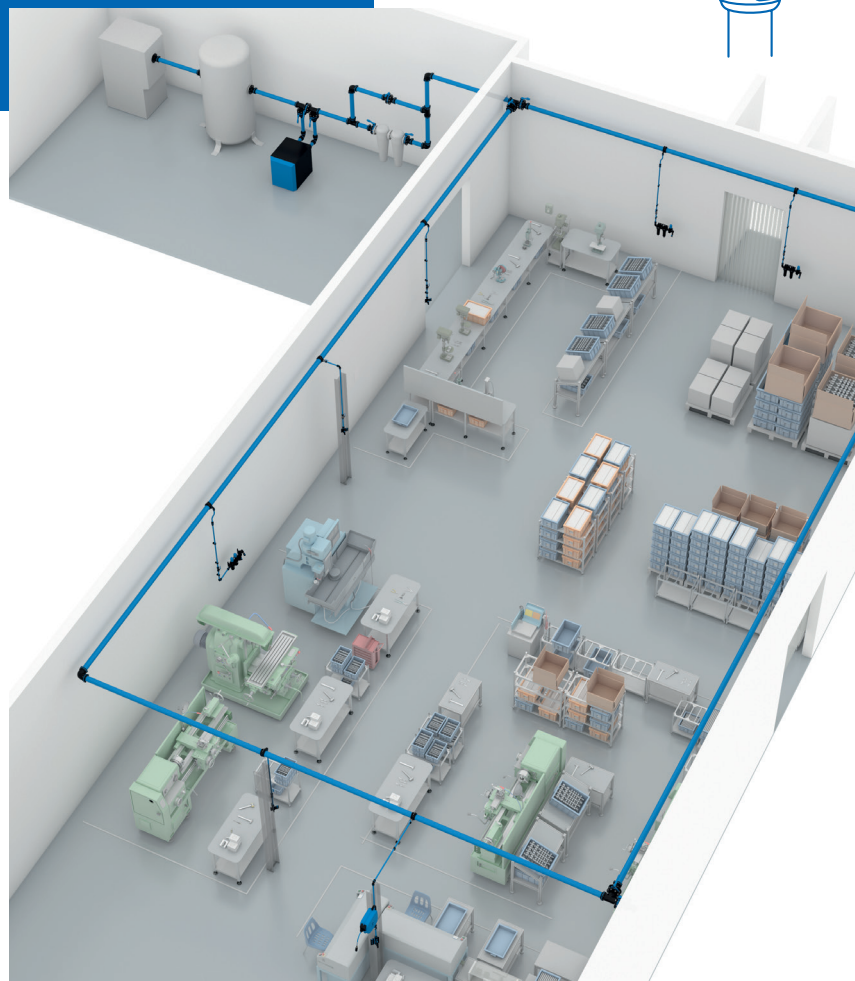


SIZING A COMPRESSED AIR SYSTEM

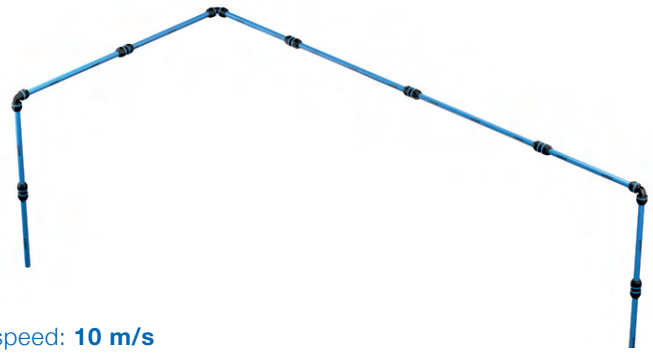
When designing a system, consider the following:

- desired flow rate
- the length of the main line.

Use the table to determine the appropriate pipe diameter with an operating pressure of **8 bar** and a maximum pressure drop is 5%.



SIZE AN OPEN SYSTEM



Pressure: **8 bar** | Max. pressure drop **5% (0.4 bar)** | Max. speed: **10 m/s**

Compressor*					Length of the main line									
Power		Flow rate			50 m	100 m	150 m	300 m	500 m	750 m	1 000 m	1 300 m	1 600 m	
kW	CV	Nm ³ /h	NI/min	Scfm	164 ft	328 ft	492 ft	984 ft	1640 ft	2460 ft	3280 ft	4265 ft	5249 ft	
2,2	3	22	367	13	16	16	20	20	25	25	25	25	32	
3	4	30	500	18	16	20	20	25	25	25	32	32	32	
4	5,5	40	667	24	20	20	25	25	32	32	32	32	32	
5,5	7,5	50	834	29	20	25	25	25	32	32	32	40	40	
7,5	10	70	1 167	41	20	25	25	32	32	40	40	40	40	
11	15	100	1 667	59	25	32	32	32	40	40	40	50	50	
15	20	150	2 500	88	32	32	32	40	50	50	50	50	63	
18	25	180	3 000	106	32	32	40	40	50	50	50	63	63	
22	30	220	3 667	129	40	40	40	50	50	50	63	63	63	
26	35	260	4 334	153	40	40	40	50	50	63	63	63	63	
30	40	300	5 000	176	40	40	50	50	63	63	63	63	80	
37	50	370	6 167	218	50	50	50	50	63	63	63	80	80	
45	60	450	7 500	265	50	50	50	63	63	80	80	80	80	
55	75	550	9 167	324	63	63	63	63	80	80	80	80	100	
75	100	750	12 500	441	63	63	63	80	80	80	100	100	100	
90	120	900	15 000	529	80	80	80	80	80	100	100	100	100	
110	150	1 100	18 334	647	80	80	80	80	100	100	100	100	160	
130	175	1 300	21 667	765	80	80	80	80	100	100	100	160	160	
160	215	1 600	26 667	941	100	100	100	100	100	160	160	160	160	
200	270	2 000	33 334	1 176	100	100	100	100	160	160	160	160	160	
250	340	2 500	41 667	1 471	160	160	160	160	160	160	160	160	160	
300	405	3 000	50 000	1 765	160	160	160	160	160	160	160	160	160	
350	475	3 500	58 334	2 059	160	160	160	160	160	160	160	160	160	
400	540	4 000	66 667	2 353	160	160	160	160	160	160	160	160		
450	600	4 500	75 000	2 647	160	160	160	160	160	160	160	160		
500	700	5 000	83 334	2 941	160	160	160	160	160	160				
600	810	6 000	100 000	3 529										
700	950	7 000	116 667	4 118										
800	1 080	8 000	133 334	4 706										

* These values may vary slightly from compressor data

THERMAL EXPANSION

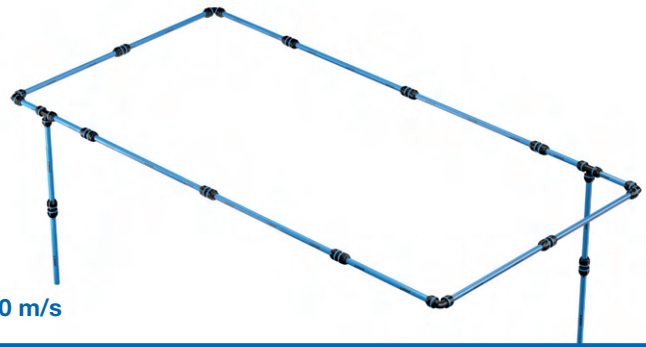


As temperatures fluctuate up or down, aluminium naturally expands and contracts. To compensate, we recommend installing equipment along the line to absorb the movement.

- Use a flexible hose for small diameters
- Install expansion kits to accommodate large diameters.

An expansion hose is necessary when a straight line exceeds 50 meters or more. Use this flexible hose to easily change direction of the air flow (angles) or avoid obstacles in the facility (pillars, beams, etc.).

SIZE A CLOSED SYSTEM



Pressure: **8 bar** | Max. pressure drop **5% (0.4 bar)** | Max. speed: **10 m/s**

Compressor*					Length of the main line									
Power		Flow rate			50 m	100 m	150 m	300 m	500 m	750 m	1 000 m	1 300 m	1 600 m	
kW	CV	Nm ³ /h	NI/min	Scfm	164 ft	328 ft	492 ft	984 ft	1640 ft	2460 ft	3280 ft	4265 ft	5249 ft	
2,2	3	22	367	13	16	16	16	16	20	20	20	20	25	
3	4	30	500	18	16	16	16	20	20	20	25	25	25	
4	5,5	40	667	24	16	16	20	20	25	25	25	25	32	
5,5	7,5	50	834	29	16	20	20	20	25	25	25	32	32	
7,5	10	70	1 167	41	20	20	20	25	25	32	32	32	32	
11	15	100	1 667	59	20	25	25	25	32	32	32	40	40	
15	20	150	2 500	88	25	25	32	32	32	40	40	40	40	
18	25	180	3 000	106	25	25	32	32	40	40	40	50	50	
22	30	220	3 667	129	25	32	32	40	40	40	50	50	50	
26	35	260	4 334	153	32	32	32	40	40	50	50	50	50	
30	40	300	5 000	176	32	32	40	40	50	50	50	50	63	
37	50	370	6 167	218	32	32	40	40	50	50	50	63	63	
45	60	450	7 500	265	40	40	40	50	50	63	63	63	63	
55	75	550	9 167	324	40	40	50	50	63	63	63	63	80	
75	100	750	12 500	441	50	50	50	63	63	63	80	80	80	
90	120	900	15 000	529	50	50	50	63	63	80	80	80	80	
110	150	1 100	18 334	647	63	63	63	63	80	80	80	80	100	
130	175	1 300	21 667	765	63	63	63	63	80	80	80	100	100	
160	215	1 600	26 667	941	63	63	63	80	80	80	100	100	100	
200	270	2 000	33 334	1 176	80	80	80	80	80	100	100	100	100	
250	340	2 500	41 667	1 471	80	80	80	80	100	100	100	160	160	
300	405	3 000	50 000	1 765	100	100	100	100	100	100	160	160	160	
350	475	3 500	58 334	2 059	100	100	100	100	100	160	160	160	160	
400	540	4 000	66 667	2 353	100	100	100	100	160	160	160	160	160	
450	600	4 500	75 000	2 647	160	160	160	160	160	160	160	160	160	
500	700	5 000	83 334	2 941	160	160	160	160	160	160	160	160	160	
600	810	6 000	100 000	3 529	160	160	160	160	160	160	160	160	160	
700	950	7 000	116 667	4 118	160	160	160	160	160	160	160	160		
800	1 080	8 000	133 334	4 706	160	160	160	160	160	160				

* These values may vary slightly from compressor data

EXPANSION COEFFICIENT: 0.024 mm per METRE and per DEGREE °C.



EXPANSION IS CALCULATED AS FOLLOWS:

C = COEFFICIENT OF EXPANSION (0.024 mm)

L = STRAIGHT LINE LENGTH (m)

ΔT° = DIFFERENCE BETWEEN MAXIMUM AND MINIMUM ROOM TEMPERATURE IN °C.

DL = OVERALL EXPANSION (mm)

IN OTHER WORDS: DL = C x L x ΔT°

EXAMPLE:

A 20 meter line laid with ø40 mm piping, at an ambient temperature of 15°C, can be subjected to a maximum temperature of 40°C

→, i.e. a difference of 25°C.

DL: 0.024 (mm) x 20 (m) x 25 (40°C – 15°C) = 12 mm

PREVOST PIPING SYSTEM

The 100% aluminium concept



The **PREVOST PIPING SYSTEM's** pipes and fittings are **100% aluminium, compact, lightweight and professional strength.**

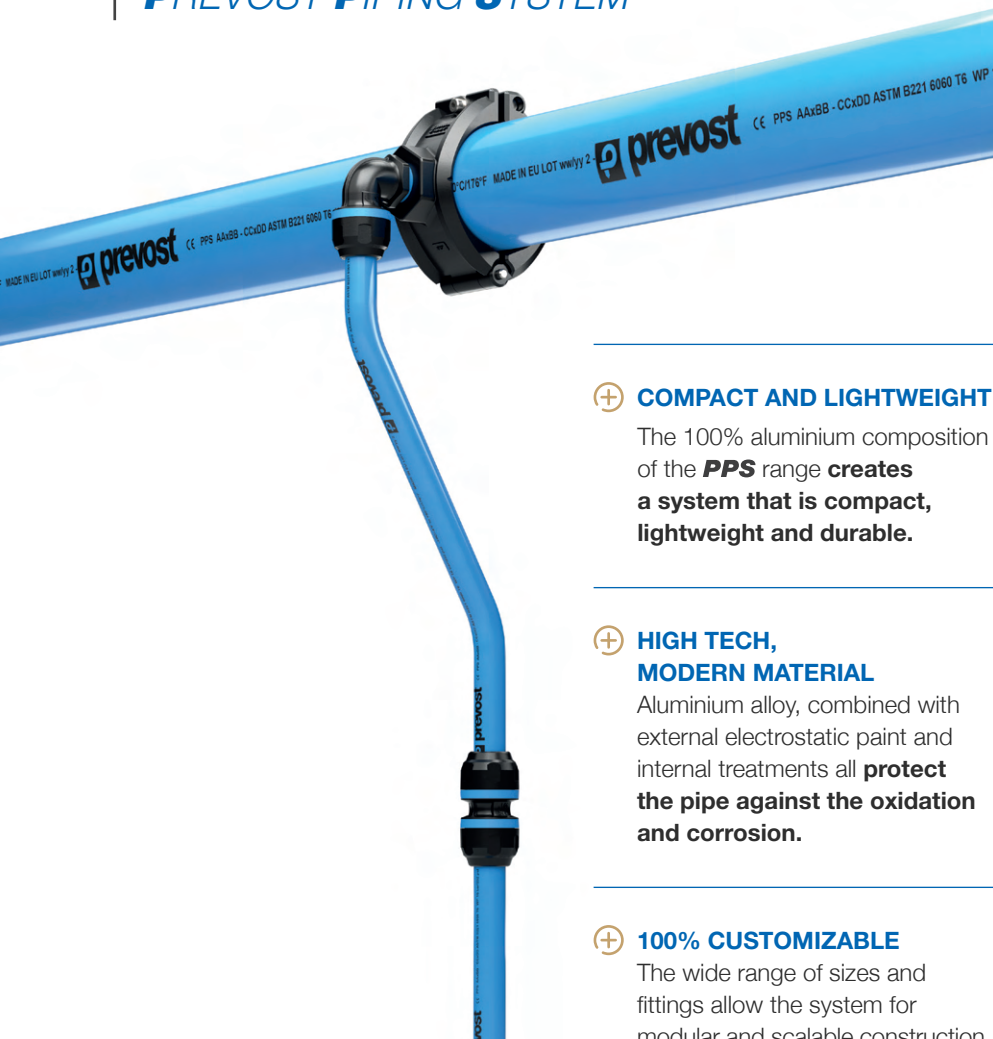
They can be installed easily and quickly for immediate pressurisation.

The **PREVOST PIPING SYSTEM** range ensures:

- clean, high quality air at all times
- a sealed system
- an optimised flow rate
- an operating pressure range: **from - 0.98 bar to + 16 bar**
- a temperature range: **from - 20°C to + 80°C**

Workstations are well supplied, accessible and ergonomically designed. The facility is durable and can be easily upgraded.

BENEFITS OF A PREVOST PIPING SYSTEM



+ EASY AND QUICK TO ASSEMBLE

Simply insert the pipe into the **PPS** fitting then **tighten the nut.**

+ LEAK FREE WITH MINIMAL PRESSURE LOSS

The "**PPS Grip Concept**", creates a secure, **leak free connection.** The smooth internal surface generates a laminar flow, a low friction coefficient and a maximum flow diameter which are all factors **to reduce pressure loss.**

+ COMPATIBLE WITH COMPRESSOR OILS

Aluminium and viton seals are compatible with compressor lubricants.

+ TOUGH MATERIAL

Aluminium guarantees long term performance:

- **mechanical strength**
- **pressure resistance**
- **shocks absorbent**

+ COMPACT AND LIGHTWEIGHT

The 100% aluminium composition of the **PPS** range **creates a system that is compact, lightweight and durable.**

+ HIGH TECH, MODERN MATERIAL

Aluminium alloy, combined with external electrostatic paint and internal treatments all **protect the pipe against the oxidation and corrosion.**

+ 100% CUSTOMIZABLE

The wide range of sizes and fittings allow the system for modular and scalable construction.

THE **BENEFITS** OF ALUMINIUM COMPARED TO **OTHER MATERIALS**



	Aluminium - PPS	Steel	Galvanised steel	Stainless steel
LIGHTWEIGHT	★ ★ ★	★	★	★
QUICK ASSEMBLY	★ ★ ★	★	★	★ ★
PIPE CAN BE PAINTED	★ ★ ★	★	★	★
COMPRESSED AIR DEDICATED MATERIAL	★ ★ ★	★	★	★
CORROSION PROTECTION	★ ★ ★	★	★	★ ★ ★
MINIMAL PRESSURE LOSS & SMOOTH SURFACE	★ ★ ★	★	★	★ ★
LEAK PROTECTION	★ ★ ★	★	★	★ ★
CLEAN AIR CERTIFICATION	★ ★ ★	★	★	★ ★
HIGH FLOW RATE	★ ★ ★	★	★	★ ★

The **PREVOST PIPING SYSTEM** range

CERTIFICATIONS BY INDUSTRY APPLICATION

Industry standards



* Only for product made in Italy



Pressurised equipment



Safety and protection



Fluid properties



Environmental



FIND OUT ABOUT OUR DOCUMENTATION

PREVOST PIPING SYSTEM

100% ALUMINIUM PIPES



- **STAINLESS STEEL**
- **MINIMAL PRESSURE LOSS**
laminar flow from smooth internal surface
- **UV AND HEAT RESISTANT**
low coefficient of expansion
- **ISO MARKING AND COLOUR**
all diameters are available for **RAL 5012 (blue)** and **RAL 7001 (grey)** pipes. 20, 25 and 50 mm diameters are also available for **RAL 6029 (green)**.
- **NO FIRE HAZARD**
system does not require a fire permit
- **SIMPLE TOOLS** easy to cut and chamfer for simplified installation and maintenance
- **LIGHTWEIGHT**
- **COST-EFFECTIVE**

TECHNICAL CHARACTERISTICS OF PPS PIPE

Material:

Extruded aluminium.
Alloy EN AW 6063 T6 UNI-EN 573-3

Treatment:

Internal/external treatment
(RoHS compliant)

Coating:

Electrostatic paint

Extrusion quality:

Calibrated without welding

Compatible fluids:

Compressed air, vacuum, neutral gases

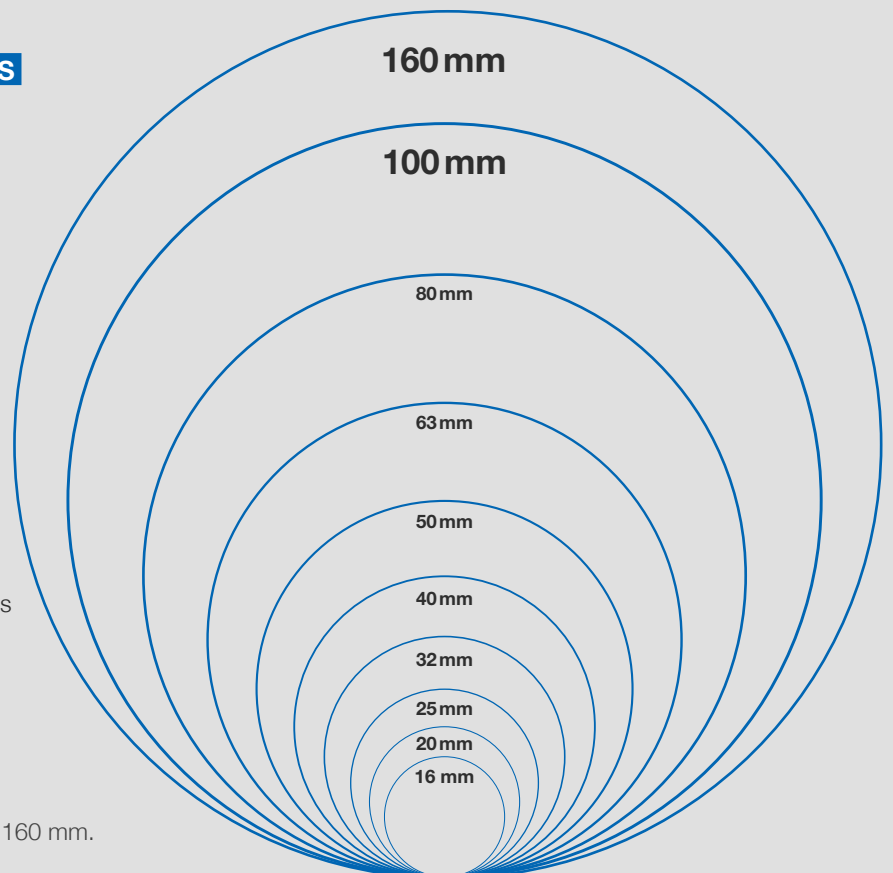
Pipe lengths:

3 or 5.5 metres

Density: 2.7 kg/dm³

Pipe outside diameter:

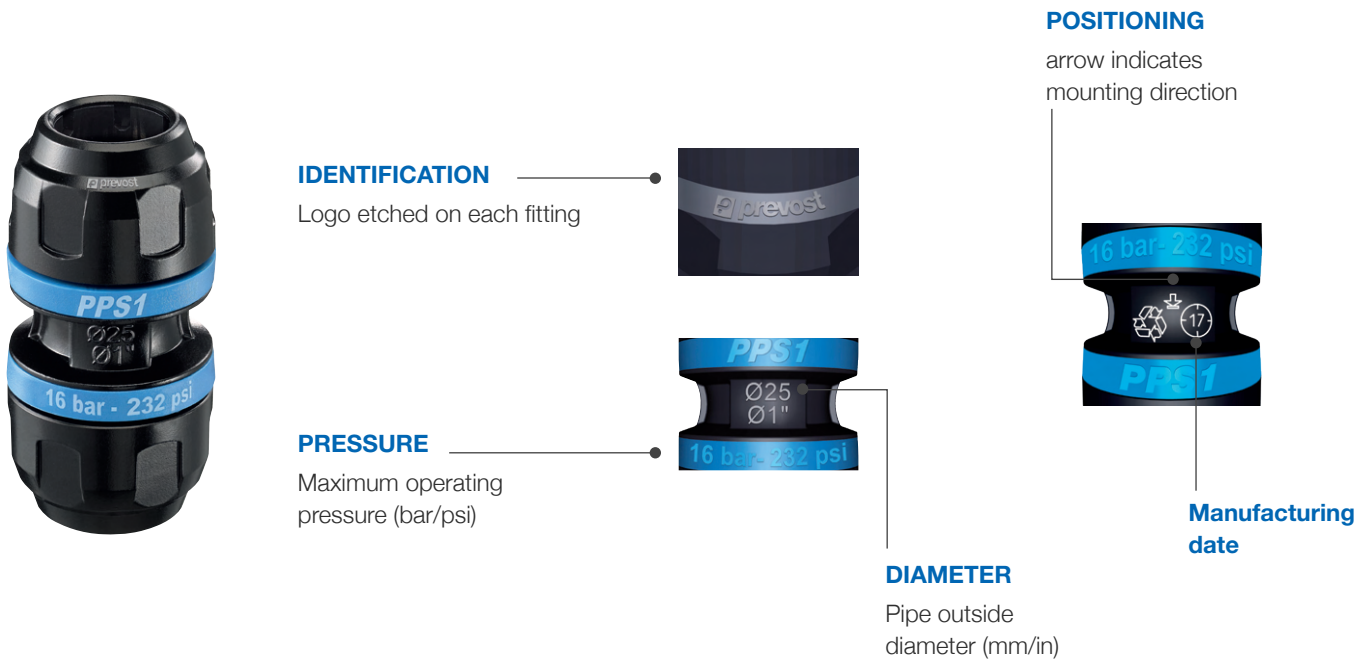
Ø 16, 20, 25, 32, 40, 50, 63, 80, 100, 160 mm.



PREVOST PIPING SYSTEM

100% aluminium fittings

Prevost designs and manufactures compact, high-performance fittings.

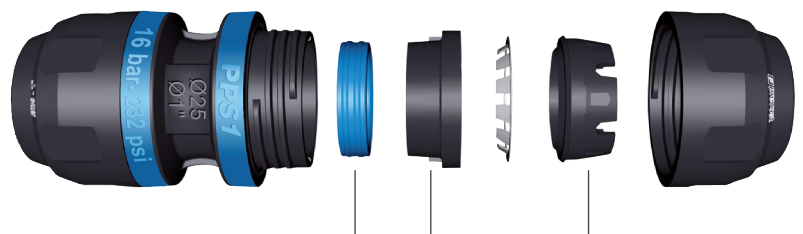


THE **PPS** GRIP CONCEPT

The tube's retention in the fitting is ensured by a stainless steel ring whose teeth penetrate the aluminum.

This is what we call the **PPS Grip Concept** unique in the market.

The double-lobed, lubricated seal guarantees a secure connection and provides optimum results even in the harshest working conditions.



LEAK-TIGHT CONNECTION

THE INTERNAL PARTS REMAIN ATTACHED TO THE BODY AFTER ASSEMBLY

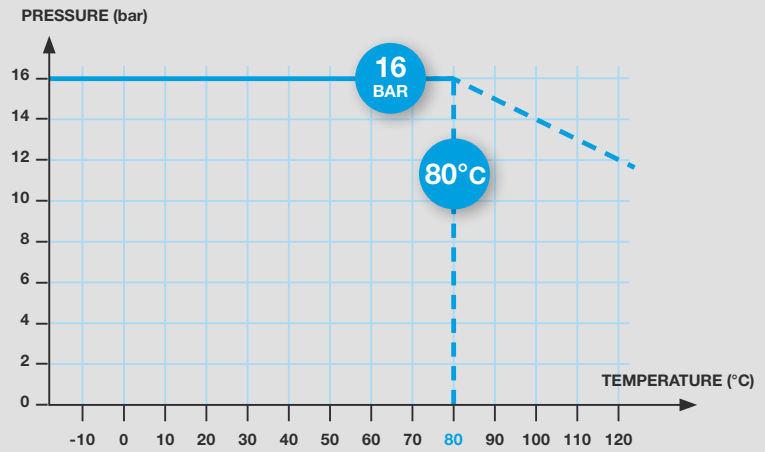
TECHNICAL SPECIFICATIONS OF FITTINGS

Body and nut:
100% aluminium EN AB 46100

PPS Grip Concept:
stainless ring

Tapping flange
to remove condensates

PRESSURE/TEMPERATURE GRAPH



Available diameters

- ∅ mm
- 16
- 20
- 25
- 32
- 40
- 50
- 63
- 80
- 100
- 160

AVAILABLE FITTING OPTIONS

STRAIGHT FITTINGS

Ø 16 to 80 mm



Simple union



Reducer



Pipe cap



Straight male threaded fitting



Straight female threaded fitting



Expansion kit



Sliding union

Ø 100-160 mm



Simple union



Reducer



Pipe cap



Straight female threaded fitting



Sliding union 160

BENT FITTINGS

Ø 16 to 80 mm



90° elbow



90° elbow threaded male



45° elbow

Ø 100-160 mm



90° elbow



T-PIECE FITTINGS

Ø 16 to 80 mm



Equal T-piece



Reduced T-piece



Female threaded T-piece

Ø 100-160 mm



Equal T-piece



Female threaded T-piece

CROSS FITTINGS

Ø 16 to 40 mm



Cross connector

Ø 50 to 160 mm



Cross connector

TAPPING FLANGE

A tapping flange connects a down pipe (drop) to workstations. Its purpose is to replace a traditional "gooseneck" configuration and reduce condensates in the line.

Flanges transport clean air from the side of the pipe to workstations. Any remaining condensates which remain at the bottom of the pipe are then evacuated via drains located throughout the system.

Tapping flanges can quickly integrate into existing systems, no disassembly required.

The flange is **compact** and equipped with an anti-rotation system which securely locks the fitting in place.

TAPPING FLANGES BENT

Ø 25 to 80 mm

Ø 100 mm



TAPPING FLANGES FEMALE THREADED BENT

Ø 25 to 80 mm

STRAIGHT

Ø 25 to 100 mm



TAPPING FLANGES FOR DRILLING UNDER PRESSURE

Ø 25 to 100 mm



1"

1/2"



VALVES

Ø 16 to 50 mm



Pipe/pipe

Female threaded/pipe



Threaded male/pipe

Ø 63-80 mm



Pipe/pipe
Aluminium body

Compact Connection Concept - *CC concept*

The **CC Concept** is the solution for

- Directly connect two fittings
- Optimise space
- Specifically designed for «compressor rooms»

STRAIGHTFORWARD, FAST CONNECTION METHODS

CHARACTERISTICS AND BENEFITS

1 CONNECTION WITH A FLANGE



- ANSI/ASME general-purpose flange
- Ideal for connecting a system to a compressor, a dryer or to an existing system through the standard ANSI flange

2 CONNECTION WITH A CLAMP

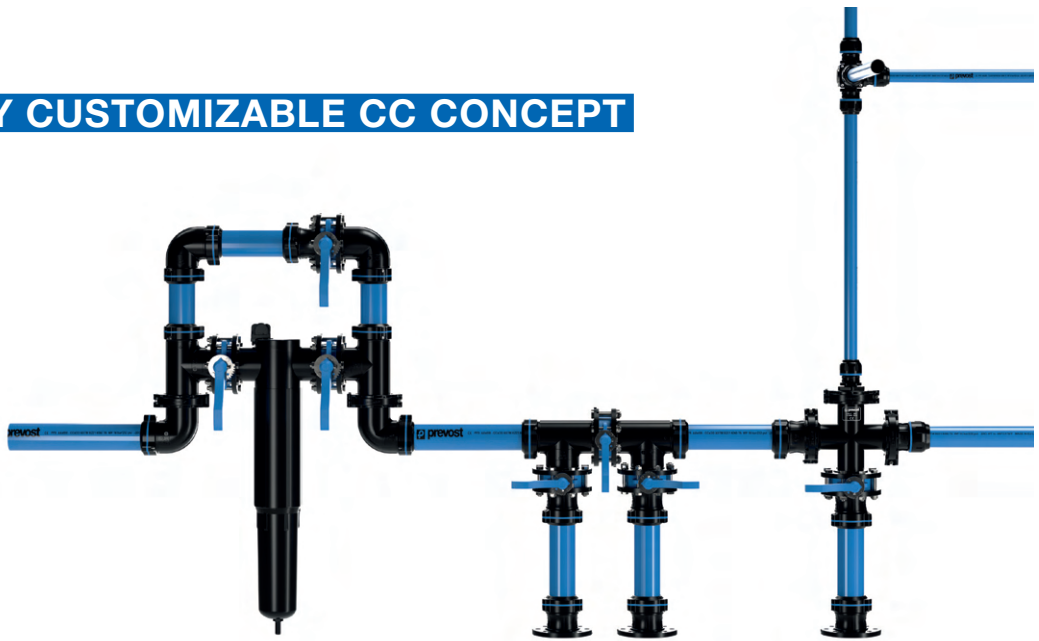


- Quickly connect two fittings with a clamp instead of cutting the pipe or installing a flange
- Design allows for easy installation and elimination of assembly errors

3 CONNECTION VALVE



THE FULLY CUSTOMIZABLE CC CONCEPT



COMPACT CONNECTION FITTINGS - CC CONCEPT

UNIONS



Connector union with 2 different diameters



Connector union

ELBOWS



Equal 90° elbow connector



45° elbow

T-PIECES



1-connector T-piece with 2 different diameters



2-connector T-piece



3-connector T-piece

CROSS FITTING



4-connector cross-piece

CONNECTING PARTS



Clamp



Flange

ALUMINIUM VALVES

Ø 63-80-100 mm



1-connector valve



2-connector valve

ACCESSORIES



Female threaded body



Plug



O-ring seal



Male threaded body



Valve Ø 160



Bolts/nuts

Safety and energy savings

REMOTE CONTROLLED PNEUMATIC SAFETY VALVE



- Compact and lightweight
- Easy to operate - even at ceiling height
- Quick to install
- 100% aluminium
- Fully pneumatic
- Available in Ø 40-50-63-80-100 mm.



1/2"-3/4"-1"



VALVES

ø40 to 80 mm

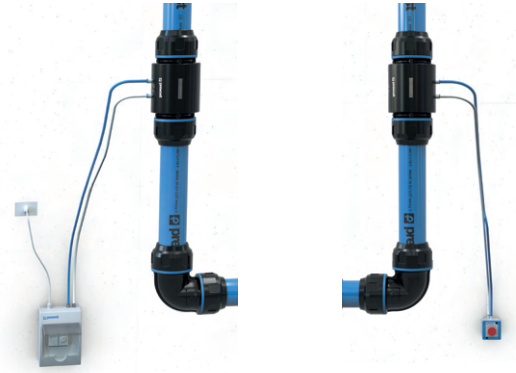


CC CONCEPT

ø100 mm

Every compressed air installation, replacement, repair or retrofit should include at least one shut off valve.

This shut off valve can quickly depressurise certain areas of the system in the event of emergency or if maintenance is necessary. By isolating only targeted areas of the system, productivity will not be lost.



Push button



Key switch

VALVE REMOTE CONTROL

Several options to control the valve are available:

- **PUSH BUTTON**
Immediately stops air flow with a push of a button
- **KEY SWITCH**
Provides limited access to the valve control
- **PROGRAMMABLE CONTROL MODULE**



Programmable control module

A programmable control module turns the system on and off at designated days or times. Automatically shutting off a system during down time will reduce energy waste and drops in pressure when the system is not in use.

Guidelines for installing a compressed air system

Ideally, the compressor room should be:

- **spacious**
- **ventilated & insulated**
- **separate from the rest of the workshop**

Connect the air compressor to the **PPS** system with a **hose** to eliminate vibrations and allow for maintenance (ref. LEF and LEM).

Install bypasses:

- **between each machine**
- **between tanks**
- **between filters**

Preferably, the **main** line should form a **loop**. For safety reasons, install the primary air lines at a height of **2.50 m** from the ground.

The diameter of the main line should be **large enough** to avoid drops in **pressure** and **to accommodate future expansion**.

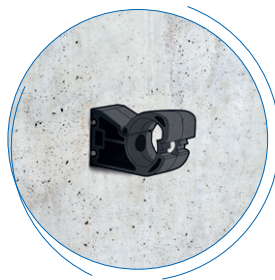
The main line:

- should be installed with a **1% slope** to gravity feed condensates to low points that terminate in drains.
- should be securely mounted with a **sufficient number of sliding clamps** that will allow the pipe to expand and contract as the temperature fluctuates (ref. PPS CI).

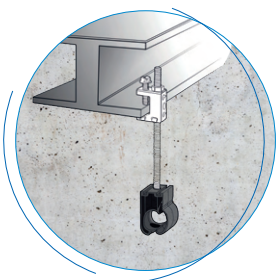
Remove residual condensates from the main line **with down pipes** (drops) that terminate in an automatic drain system.



OFFSET FROM THE WALL



DIRECTLY TO THE WALL



SUSPENDED



SUSPENDED BY A CABLE



FASTENED TO IPN/HEA BEAM WITH PLATES

MOUNTING THE SYSTEM

The mounting style is dictated by the layout of the facility.

Chose the method that is most structurally sound and aligned with the environment.

Always abide by the recommended pipe support distances between each clamp: the **maximum spacing is 3 meters**.

Supplemental equipment

A COMPLETE, UNIFIED SYSTEM

Prevost offers a full line of pneumatic tools and accessories to accommodate every compressed air system.

■ SAFETY WALL MANIFOLDS

Installed at the bottom of a downpipe (drop) to quickly connect your equipment.

Air inlet: G 1/2 or G 3/4

Multiple connection profiles available

Material: aluminium alloy

Robust 4-point wall attachment

Fitted with a manual drain

Air outlet: 1/2/4/6/8/10 single push safety couplings

Outlets equipped with anti-hose whip safety couplings which comply with ISO 4414 standard for user protection

Coupling body swivels to ergonomically position the button

Quick, reliable connection and disconnection



■ HOSE REELS

The automatic hose reel

is an essential piece of equipment for an organized workshop.

The retractable hoses will **save time, increase efficiency** and enhance safety.

All automatic hose reels comply with the Machine Directive 2006/42/EC.

The following standards also apply:

- **EN ISO 12100:** 2010-11-01 "Safety of machinery - General principles for design - Risk assessment and risk reduction"
- **EN 13857:** 2008 "Safety of machinery: safety distance to prevent upper and lower limbs from reaching hazardous areas"

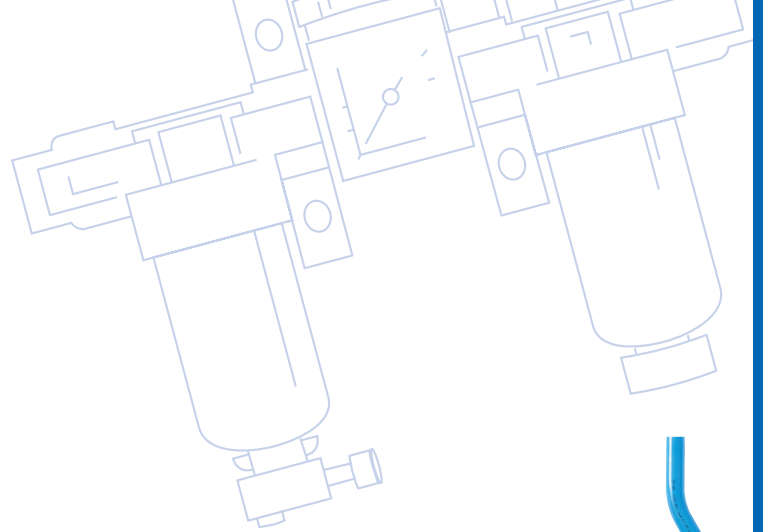


■ AIR TREATMENT UNITS

Protect pneumatic tools and equipment by purifying the compressed air.

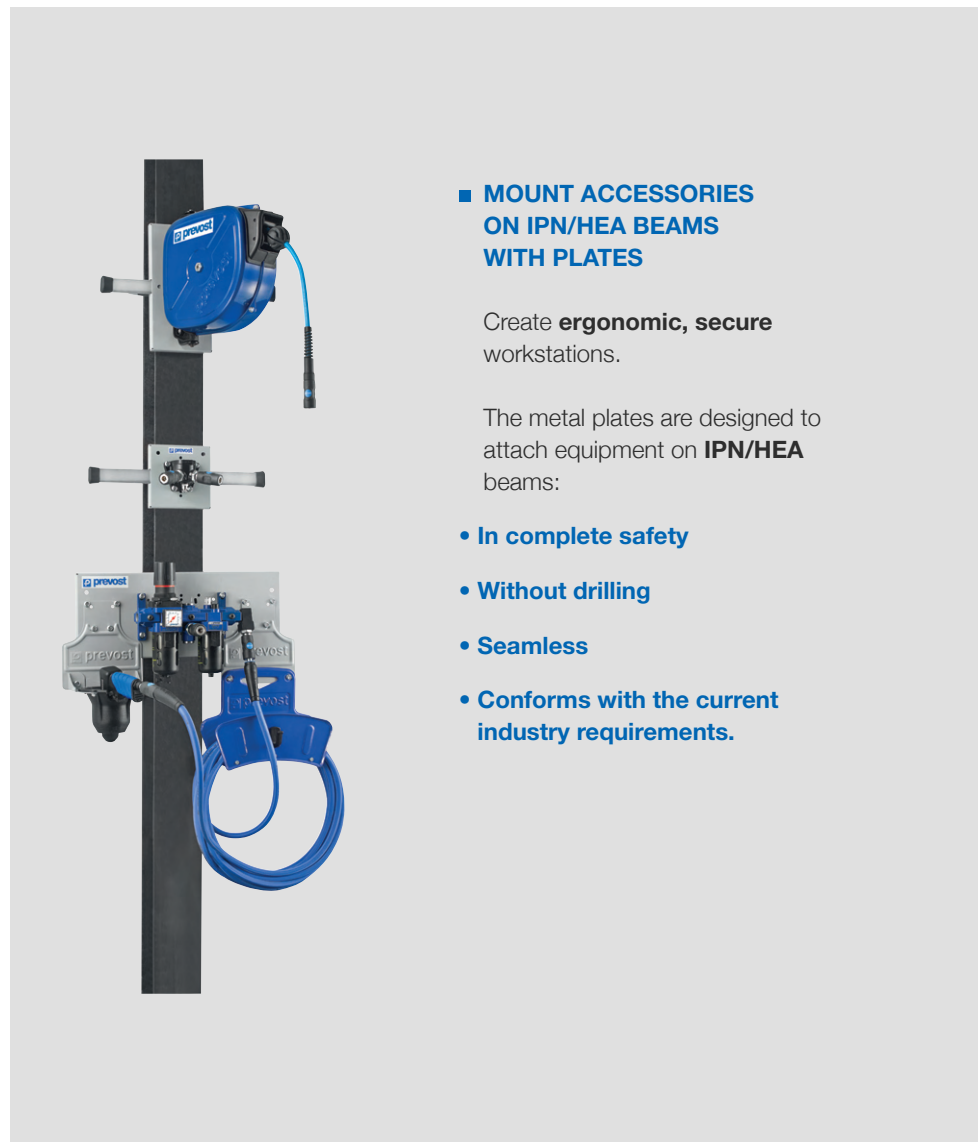
Three treatment levels are recommended:

- **Cyclonic separator:**
removes the largest solid and water particulates from the system [ref. SPC]
- **25 µm standard filtration :**
eliminates contaminants present (particulates, water, etc.) in an air system. Units are equipped with a drain to remove pollutants [ref. ALTO]
- **Submicron filtration (optimum quality):** removes the smallest residual contaminants (solid, liquid and oil aerosols) from compressed air with 99.99% efficiency rates. Provides the highest level of air quality [ref. MICRO AIR]



■ BENT LIMBS

Use a bent pipe to compensate for equipment that does not properly align or to overcome obstacles.



■ MOUNT ACCESSORIES ON IPN/HEA BEAMS WITH PLATES

Create **ergonomic, secure** workstations.

The metal plates are designed to attach equipment on **IPN/HEA** beams:

- **In complete safety**
- **Without drilling**
- **Seamless**
- **Conforms with the current industry requirements.**

PPS SQ

Prevost, as a **compressed air specialist**, now offers a complete solution from the compressor room to the point of use.

The **PPS SQ** allows the distribution of compressed air energy directly at the workstation with an ergonomic, compact and aesthetic design.



RECTANGULAR PROFILES

ADAPTED TO YOUR WORKSTATION

Color: **blue or grey**

Dimension: **1 m or 2 m**

Rectangular section size: **30 x 45 mm**

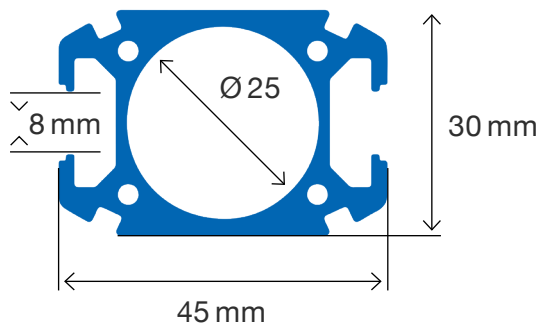
Internal diameter: **Ø 25 mm**

■ Part Numbers PPS BSQ2510

■ Part Numbers PPS BSQ2520

■ Part Numbers PPS GSQ2510

■ Part Numbers PPS GSQ2520



The design of the **PPS SQ** profile section includes a groove that allows the use of accessories (nuts, etc.) **compatible with the most common profiles on the market.**

It is the essential complement to **PREVOST PIPING SYSTEM** air systems that installs at the bottom of your existing downspouts to ensure the delivery of compressed air to the point of end use:

- Individual workstations
- Automatic machine lines

THE ACCESSORIES



■ Fixing clamp

Part Numbers

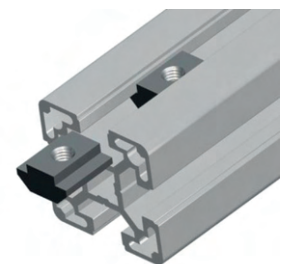
PPS SQCI25HN8



■ Fixing clamp

Part Numbers

PPS SQCI25



* Only for product made in Italy

A COMPLETE RANGE OF ACCESSORIES TO CREATE YOUR IDEAL ENVIRONMENT

THE CONNECTING PIECES FOR CONNECTING **PPS SQ** PROFILE BARS

- Union fittings
- Connection plates
- Connection fittings

+ THE BENEFITS

- 100% aluminium
- Ergonomics of workstations
- Space saving
- Modularity
- Quality & Safety
- Watertightness guaranteed
- User comfort

THE CHARACTERISTICS

- Pressure : -0.98 bar to +16 bar
- Temperature : -20 °C to +80 °C



■ **Cross connection fitting**
Part Numbers PPS1 CR27



■ **Connection fitting**
Part Numbers JN2527



■ **Tapping flange**
Part Numbers PPS SQBFT

THE ACCESSORIES

- Sliding carabiner

Part Numbers PPS SQSH8



- Tapping flange with valve

Part Numbers PPS SQBFV



- Threaded tapping flange

Part Numbers PPS SQ09C2512



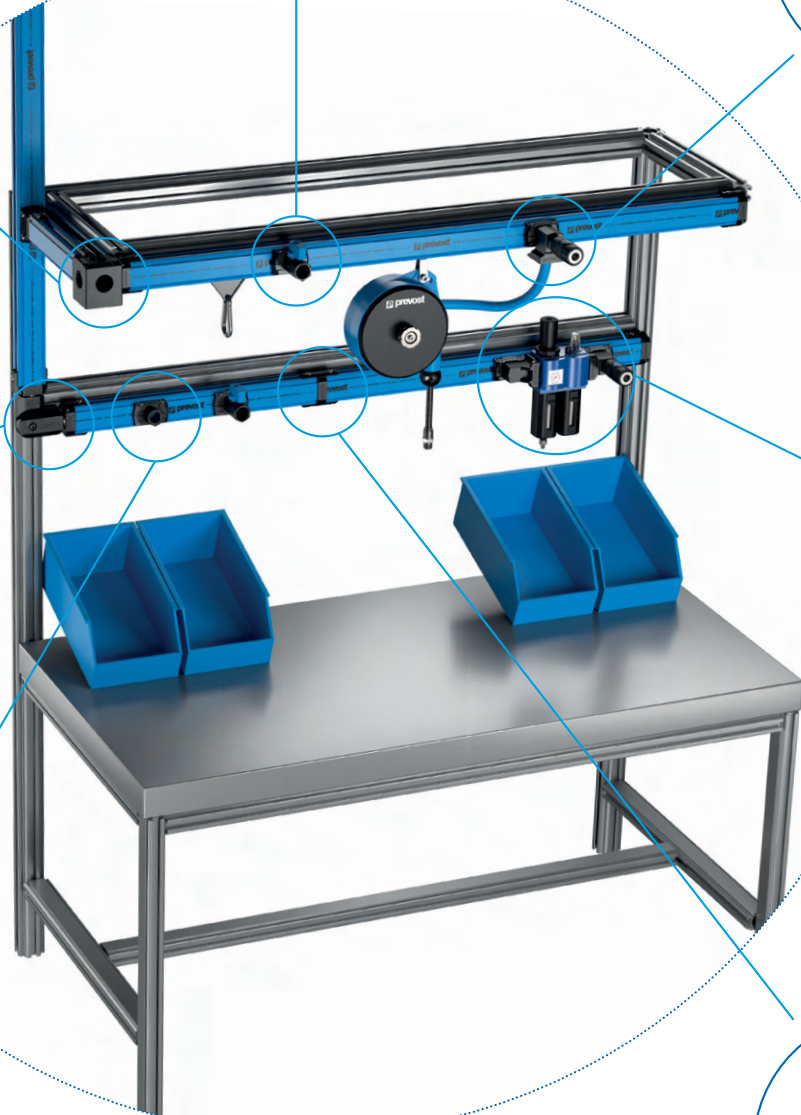
- Connection fitting

Part Numbers PPS SQFRL2512



- Union fitting

Part Numbers PPS SQUN25



PPS SYSTEM INSTALLATION EQUIPMENT



PPS

TIGHTENING WRENCHES



PPS

SINGLE-TOOTH ADJUSTABLE WRENCH



PPS
PPS SQ

TORQUE WRENCH



PPS
PPS SQ

HEXAGON SOCKET



PPS
PPS SQ

PRESSURE DRILLING TOOL



PPS

HOLE SAW FOR PIPE DRILLING



PPS

HAND TOOLS FOR CHAMFERING AND DEBURRING



PPS

CHAMFERING TOOLS FOR DRILLS



PPS

INSERTION GUIDE FOR PPS FITTINGS



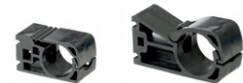
PPS
PPS SQ

ASSEMBLY GEL



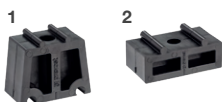
PPS

PIPE CUTTER



PPS

Ø16-32 Ø40-100
MOUNTING CLAMPS



PPS

SHIMS FOR MOUNTING CLAMPS



PPS

Ø16-50 Ø63-80 Ø100-160
MOUNTING BRACKETS FOR VALVES



PPS

PIPE INSTALLATION TOOL KIT



PPS

TIGHTENING WRENCH KITS



PPS

CHAMFERING TOOL KITS



PPS

DRILLING TOOL KITS

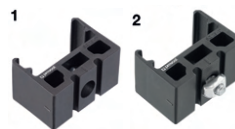
PPS SQ



HAMMER NUT



INTERNAL CHAMFERING TOOL



PIPE CLAMP



SLIDING HANGER

INSTALLING A COMPRESSED AIR SYSTEM



FIND OUT ABOUT OUR
VIDEOS



1 CUT

The pipe should be cut perpendicular to the pipe axis.

[ref. PPS CTU]



2 CHAMFER

Chamfer the pipe on the outside to facilitate insertion and avoid damaging the seal. Internal deburring will remove any cutting residue.

[ref. PPS CH]



3 MARK

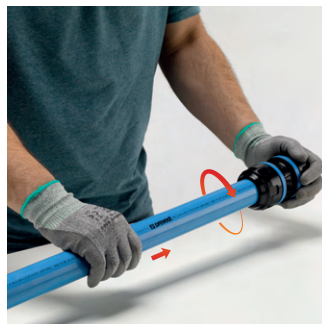
Make a mark on the pipe to check its position in the fitting before tightening (use the mark on the fitting or on the tightening wrench).



4 LUBRICATE

Assembly gel is recommended to facilitate inserting the pipe into the fitting.

[ref. PPS AL]



5 ASSEMBLE

Slightly unscrew the nut, then push the pipe rotating it slightly to achieve the recommended insertion length.



6 TIGHTEN

Tighten the nut by hand and then tighten it as recommended.

[ref. PPS CLE]

Prevost services



Determining your compressed air needs can be complicated, that is why we are here to help.

If you are planning a complex installation or expanding on an existing system, our in house **Technical Design team** is here to support you from start to finish.

Our team will provide a complete bill of material, quote, design and consulting services throughout the process.

For straightforward installations, we offer an **on line 3D design platform** to conceptualize and view your project.

Prevost provides customized **training** classes based on your business needs that cover a variety of compressed air energy topics.

Scan the QR code below to view our **PREVOST PIPING SYSTEM** videos:





Prevost UK Ltd.

Unit G, Tower Business Park, Commercial Rd,
BB3 0FJ Darwen - Lancashire - United Kingdom

Phone. +44 (0)1254 873389

sales@prevost-ltd.co.uk - www.prevost.eu



PPS DOC22EN



SAS capital: 1 840 000 Euros - RCS Annecy: B 313195026 - Siret: 313 195 026 00072

This document is non- contractual
We reserve the right to modify the product specifications without notice
Prevost publication - 06-2022 - Printed in France