

## Parallel female 90° elbow - RPC FG



### BSPP female thread

G 1/8

### For tube OD (mm)

4

### Operating pressure

0 to 10 bar

### Temperature

0°C to + 60°C

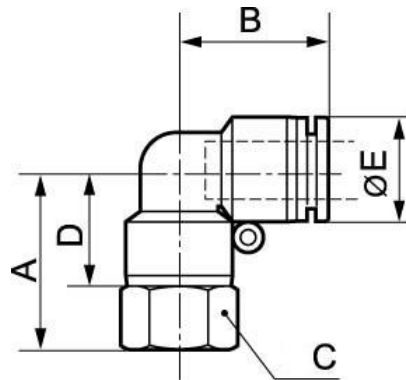
### Construction

Polymer and nickel-plated brass

## Description

Reference	BSPP female thread	For tube OD (mm)
<b>RPC FG0400</b>	G 1/8	4
<b>RPC FG0401</b>	G 1/4	4
<b>RPC FG0500</b>	G 1/8	5
<b>RPC FG0501</b>	G 1/4	5
<b>RPC FG0502</b>	G 3/8	5
<b>RPC FG0503</b>	G 1/2	5
<b>RPC FG0600</b>	G 1/8	6
<b>RPC FG0601</b>	G 1/4	6
<b>RPC FG0602</b>	G 3/8	6
<b>RPC FG0603</b>	G 1/2	6
<b>RPC FG0800</b>	G 1/8	8
<b>RPC FG0801</b>	G 1/4	8

Reference	BSPF female thread	For tube OD (mm)
<b>RPC FG0802</b>	G 3/8	8
<b>RPC FG0803</b>	G 1/2	8
<b>RPC FG1000</b>	G 1/8	10
<b>RPC FG1001</b>	G 1/4	10
<b>RPC FG1002</b>	G 3/8	10
<b>RPC FG1003</b>	G 1/2	10
<b>RPC FG1201</b>	G 1/4	12
<b>RPC FG1202</b>	G 3/8	12
<b>RPC FG1203</b>	G 1/2	12
<b>RPC FG1402</b>	G 3/8	14
<b>RPC FG1403</b>	G 1/2	14
<b>RPC FG1602</b>	G 3/8	16
<b>RPC FG1603</b>	G 1/2	16



### Dimensions

Reference	A mm	B mm	C mm	D mm	E mm
<b>RPC FG0400</b>	22.5	17.5	12	15.5	10
<b>RPC FG0401</b>	23	17.5	17	15.5	10
<b>RPC FG0500</b>	25	20.5	12	18	12.8
<b>RPC FG0501</b>	25.5	20.5	17	18	12.8
<b>RPC FG0502</b>	26	20.5	19	18	12.8
<b>RPC FG0503</b>	28	20.5	24	18	12.8
<b>RPC FG0600</b>	25	20.5	12	18	12.8
<b>RPC FG0601</b>	25.5	20.5	17	18	12.8
<b>RPC FG0602</b>	26	20.5	19	18	12.8
<b>RPC FG0603</b>	28	20.5	24	18	12.8
<b>RPC FG0800</b>	26.7	22.5	14	19.7	13.8
<b>RPC FG0801</b>	27.2	22.5	17	19.7	13.8
<b>RPC FG0802</b>	27.7	22.5	19	19.7	13.8
<b>RPC FG0803</b>	29.7	22.5	24	19.7	13.8
<b>RPC FG1000</b>	30.2	26.3	19	23.2	16.8
<b>RPC FG1001</b>	30.7	26.3	19	23.2	16.8
<b>RPC FG1002</b>	31.2	26.3	19	23.2	16.8
<b>RPC FG1003</b>	33.2	26.3	24	23.2	16.8
<b>RPC FG1201</b>	31.5	27.8	19	24	19.8

Reference	A mm	B mm	C mm	D mm	E mm
<b>RPC FG1202</b>	32	27.8	21	24	19.8
<b>RPC FG1203</b>	34	27.8	24	24	19.8
<b>RPC FG1402</b>	33.5	29.8	22	25.5	22.7
<b>RPC FG1403</b>	35.5	29.8	24	25.5	22.7
<b>RPC FG1602</b>	35	30.8	24	27	23.8
<b>RPC FG1603</b>	37	30.8	24	27	23.8