

Connector - RPJ PG



Metric male thread
M5

Fitting ID (mm)
4

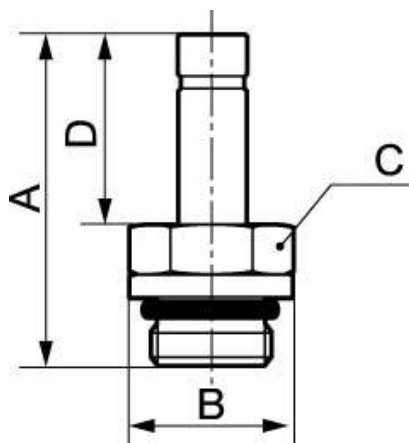
Operating pressure
0 to 10 bar

Temperature
0°C to + 60°C

Construction
Polymer and nickel-plated brass

Description

Reference	Metric male thread	Fitting ID (mm)
RPJ PG04M5	M5	4
RPJ PG05M5	M5	5
RPJ PG06M5	M5	6



Dimensions

Reference	A mm	B mm	C mm	D mm
RPJ PG04M5	27	10.4	9	18
RPJ PG05M5	27	9.2	8	18
RPJ PG06M5	27	11.5	10	18