

Parallel female thread s/steel adaptor - Stainless Steel



BSPP female thread

G 1/4

Technology

Push button

Operating pressure

0 to 12 bar

Flow rate at 6 bar

800 l/min (?P = 0,6 bar)

ID Passage

6 mm

Temperature

-15°C to +70°C

Construction

Composite body Stainless
steel valve

Applications

Corrosive atmospheres

Highlight

Non scratch

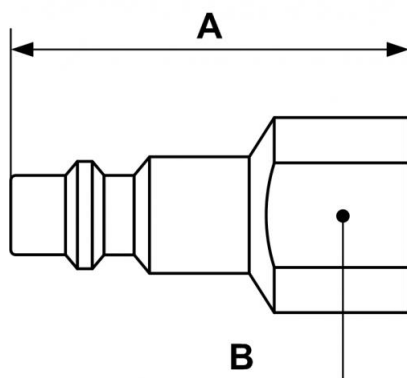
Description

Reference

PROXI 066101

BSPP female thread

G 1/4



Dimensions		
Reference	A mm	B mm
PROXI 066101	40	17