

## Parallel female tee piece - A11



### BSPP female thread

G 1 1/4

### Operating pressure

0 to 15 bar

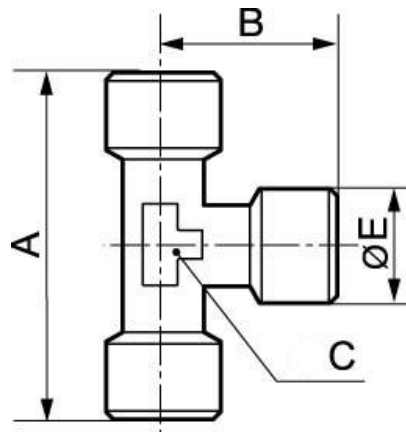
### Construction

Brass and nickel-plated brass

### Description

Reference	BSPP female thread
<b>A11 18</b>	G 1/8
<b>A11 14</b>	G 1/4
<b>A11 38</b>	G 3/8
<b>A11 12</b>	G 1/2
<b>A11 34</b>	G 3/4
<b>A11 01</b>	G 1

Reference	BSPF female thread
<b>A11 42</b>	G 1 1/4
<b>A11 49</b>	G 1 1/2
<b>A11 60</b>	G 2



Dimensions				
Reference	A mm	B mm	C mm	E mm
<b>A11 18</b>	42	21	10	13.5
<b>A11 14</b>	51	26	13	17
<b>A11 38</b>	56	28.5	15	20.5
<b>A11 12</b>	67	34.5	20	25.5
<b>A11 34</b>	73	37	25	32
<b>A11 01</b>	90	45	30	39

Reference	A mm	B mm	C mm	E mm
<b>A11 42</b>	90	45	44.5	51.5
<b>A11 49</b>	93	54	50	57.7
<b>A11 60</b>	103	55	62.5	70