

## Tapered male union - A2



### BSPT male thread

R 1/8

### Operating pressure

0 to 15 bar

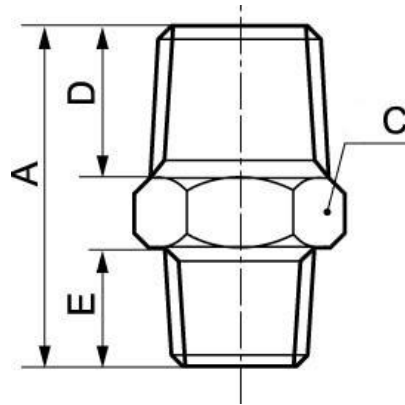
### Construction

Brass and nickel-plated  
brass

## Description

Reference	BSPT male thread
<b>A2 1818</b>	R 1/8
<b>A2 1814</b>	R 1/4
<b>A2 1838</b>	R 3/8
<b>A2 1414</b>	R 1/4
<b>A2 1438</b>	R 3/8
<b>A2 1412</b>	R 1/2
<b>A2 3838</b>	R 3/8
<b>A2 3812</b>	R 1/2
<b>A2 1212</b>	R 1/2
<b>A2 1234</b>	R 3/4

Reference	BSPT male thread
<b>A2 3434</b>	R 3/4
<b>A2 3401</b>	R 1
<b>A2 0101</b>	R 1
<b>A2 4942</b>	R 1 1/4
<b>A2 4201</b>	R 1
<b>A2 4242</b>	R 1 1/4
<b>A2 4949</b>	R 1 1/2
<b>A2 6049</b>	R 1 1/2
<b>A2 6060</b>	R 2



### Dimensions

Reference	A mm	C mm	D mm	E mm
<b>A2 1818</b>	21	12	8	8
<b>A2 1814</b>	24	14	11	8
<b>A2 1838</b>	25	17	11.5	8
<b>A2 1414</b>	27	14	11	11
<b>A2 1438</b>	28	17	11.5	11
<b>A2 1412</b>	32	22	14	11
<b>A2 3838</b>	29	17	11.5	11.5
<b>A2 3812</b>	32.5	22	14	11.5
<b>A2 1212</b>	35	22	14	14
<b>A2 1234</b>	37	27	16.5	14
<b>A2 3434</b>	39.5	27	16.5	16.5
<b>A2 3401</b>	42.5	34	19	16.5
<b>A2 0101</b>	45.5	34	19	19
<b>A2 4942</b>	54.5	54	23	22
<b>A2 4201</b>	49.5	49	21.5	20
<b>A2 4242</b>	49.5	49	21	21
<b>A2 4949</b>	57	53.5	24	24
<b>A2 6049</b>	59.5	67	26.5	23
<b>A2 6060</b>	59	67	25	25