

## Parallel female thread - Hose tail - JFTF



### BSPF female thread

G 1/8

### For hose ID (mm)

6

### Construction

Nickel-plated brass

### Technology

Straight through path

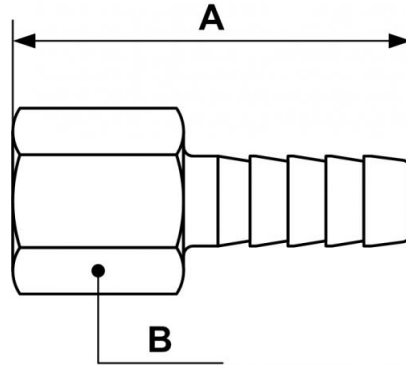
### Operating pressure

0 to 15 bar

## Description

Reference	BSPF female thread	For hose ID (mm)	Construction
<b>JFTF 1806</b>	G 1/8	6	Nickel-plated brass
<b>JFTF 1406</b>	G 1/4	6	Brass
<b>JFTF 1407</b>	G 1/4	7	Brass
<b>JFTF 1408</b>	G 1/4	8	Brass
<b>JFTF 1409</b>	G 1/4	9	Brass

Reference	BSPF female thread	For hose ID (mm)	Construction
<b>JFTF 3810</b>	G 3/8	10	Nickel-plated brass



Dimensions		
Reference	A mm	B mm
<b>JFTF 1806</b>	30	14
<b>JFTF 1406</b>	42	17
<b>JFTF 1407</b>	42	17
<b>JFTF 1408</b>	42	17
<b>JFTF 1409</b>	42	17
<b>JFTF 3810</b>	34	20