

Parallel female Micro straight fitting - RCD FG



Metric female thread

M5

For tube OD (mm)

4

Operating pressure

0 to 10 bar

Temperature

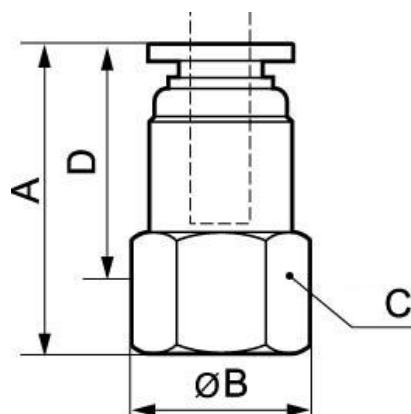
0°C to + 60°C

Construction

Polymer and nickel-plated
brass

Description

Reference	Metric female thread	For tube OD (mm)
RLD FG04M5	M5	4
RLD FG06M5	M5	6
RLD FG04M3	M3	4



Dimensions				
Reference	A mm	B mm	C mm	D mm
RLD FG04M5	18.7	9.5	8	13.7
RLD FG06M5	20.2	12	10	15.2
RLD FG04M3	18.2	9.5	8	13.7