

Parallel female tee piece - A11



BSPP female thread

G 1/8

Operating pressure

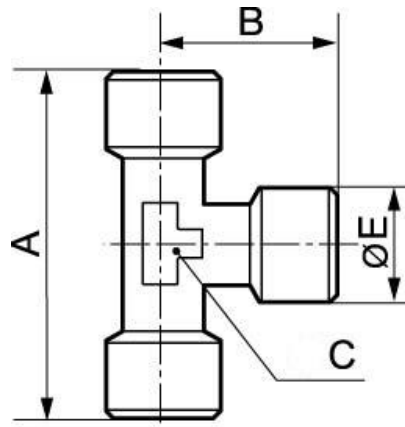
0 to 15 bar

Construction

Brass and nickel-plated
brass

Description

Reference	BSPP female thread
A11 18	G 1/8
A11 14	G 1/4
A11 38	G 3/8
A11 12	G 1/2
A11 34	G 3/4
A11 01	G 1
A11 42	G 1 1/4
A11 49	G 1 1/2
A11 60	G 2



Dimensions

Reference	A mm	B mm	C mm	E mm
A11 18	42	21	10	13.5
A11 14	51	26	13	17
A11 38	56	28.5	15	20.5
A11 12	67	34.5	20	25.5
A11 34	73	37	25	32
A11 01	90	45	30	39
A11 42	90	45	44.5	51.5
A11 49	93	54	50	57.7
A11 60	103	55	62.5	70