

Female thread one port wall bracket - 1 coupler and drain - British Profile - ID passage 6 mm



Inlet BSPF female thread

G 1/2

Technology

"One push" safety system (avoids hose whip)

ID Passage

6 mm

Outlet 1 coupling

BSI 06

Operating pressure

2 to 12 bar

Temperature

-15°C to +70°C

Highlight

Anti-static Non scratch

Profile

British

Flow rate at 6 bar

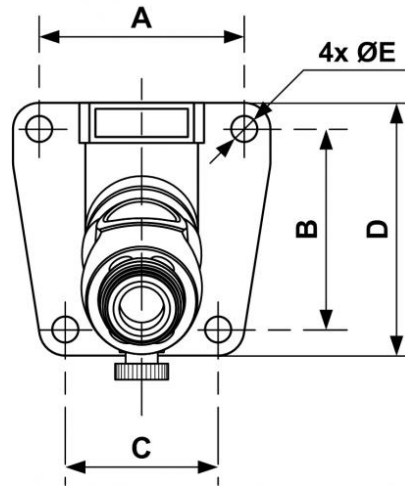
750 l/min (?P : 0,6 bar)

Construction

Composite body

Description

Reference	Inlet BSPF female thread	Outlet 1 coupling
BSI 061103WK	G 1/2	BSI 06



Dimensions

Reference	A mm	B mm	C mm	D mm	E mm
BSI 061103WK	51	50	38	63	6.5