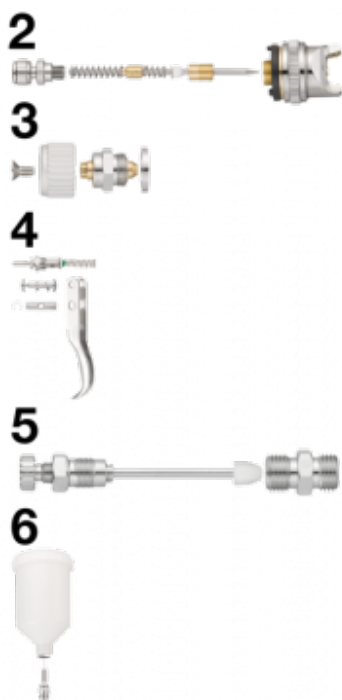


G05HVW water-based paint spray gun parts



Description

(2) Set for complete nozzle
1.0 mm with complete paint
flow rate adjustment screw

BSPP male thread

G 1/4

Construction

Body : Aluminium, Needle
and nozzle : Stainless steel

Applications

Automotive and industrial
sectors

Highlight

Three types of adjustment
(width of stream, paint flow
rate and air flow rate)

| Description | |
|---------------------|-----------------------------------------------------------------------------------|
| Reference | Description |
| CAR G05HVWK1 | (2) Set for complete nozzle 1.0 mm with complete paint flow rate adjustment screw |
| CAR G05HVWK3 | (3) Set for jet form control |
| CAR G05HVWK4 | (4) Set for complet valve with trigger |

| Reference | Description |
|---------------------|---------------------------------------------------|
| CAR G05HVWK5 | (5) Set for complet air adjustwith nipple for air |
| CAR G05HVWK2 | (6) Set for complet cup |

