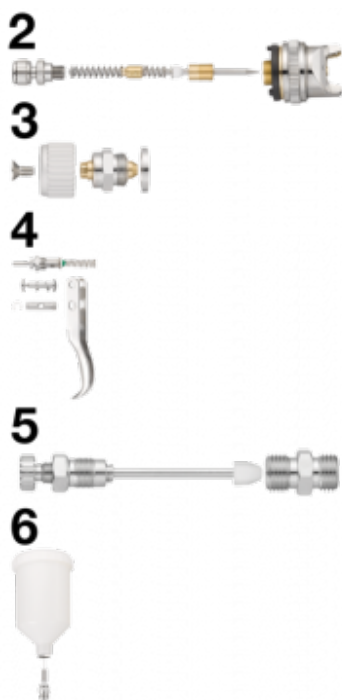


G04LVW water-based paint spray gun parts



Description

(2) Set for complete nozzle
Ø 1.0 mm with complete
paint flow rate adjustment
screw

BSPP male thread

G 1/4

Construction

Body : Aluminium, Needle
and nozzle : Stainless steel

Applications

Automotive and industrial
sectors

Highlight

Three types of adjustment
(width of stream, paint flow
rate and air flow rate)

Description

Reference

CAR G04LVWK1

Description

(2) Set for complete nozzle Ø 1.0 mm with complete paint
flow rate adjustment screw

