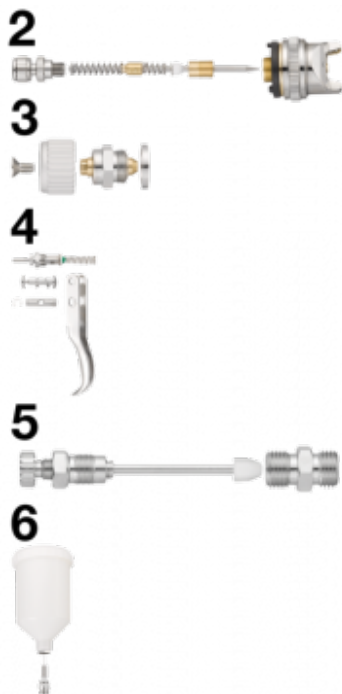


G04HVW water-based paint spray gun parts



Description

(2) Set for complete nozzle
Ø 1.0 mm with complete
paint flow rate adjustment
screw

BSPP male thread

G 1/4

Construction

Body : Aluminium, Needle
and nozzle : Stainless steel

Applications

Automotive and industrial
sectors

Highlight

Three types of adjustment
(width of stream, paint flow
rate and air flow rate)

Description

Reference

Description

CAR G04HVWK1	(2) Set for complete nozzle Ø 1.0 mm with complete paint flow rate adjustment screw
CAR G04HLVWK3	(3) Set for jet form control
CAR G04HLVWK4	(4) Set for complet valve with trigger
CAR G04HLVWK5	(5) Set for complet air adjustwith nipple for air
CAR G04HLVWK2	(6) Complet cup Set

