

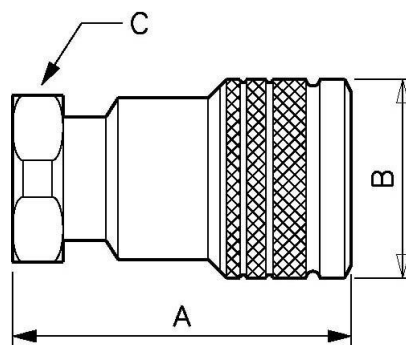
Interchangeable hydraulic coupler with ball lock mechanism



<p><u>BSPF female thread</u> G 1/4</p>	<p><u>Nominal Ø (mm)</u> 6</p>	<p><u>Flow rate (nominal in l/min)</u> 12</p>
<p><u>Max operating pressure (bar)</u> 300</p>	<p><u>Profile</u> Interchangeable</p>	<p><u>Technology</u> Ball lock</p>
<p><u>Temperature</u> -25°C to +100°C</p>	<p><u>Construction</u> Body: steel</p>	<p><u>Applications</u> Industry, Agricultural</p>
	<p><u>Connection</u> Semi-automatic</p>	

Description				
Reference	BSPF female thread	Nominal Ø (mm)	Flow rate (nominal in l/min)	Max operating pressure (bar)

HBG 061101	G 1/4	6	12	300
HBG 101102	G 3/8	10	23	250
HBG 131103	G 1/2	13	30	200
HBG 201104	G 3/4	20	60	200



Dimensions			
Reference	A mm	B mm	C mm
HBG 061101	55.5	27	19
HBG 101102	63	34	24
HBG 131103	70	38	27
HBG 201104	86	47	34