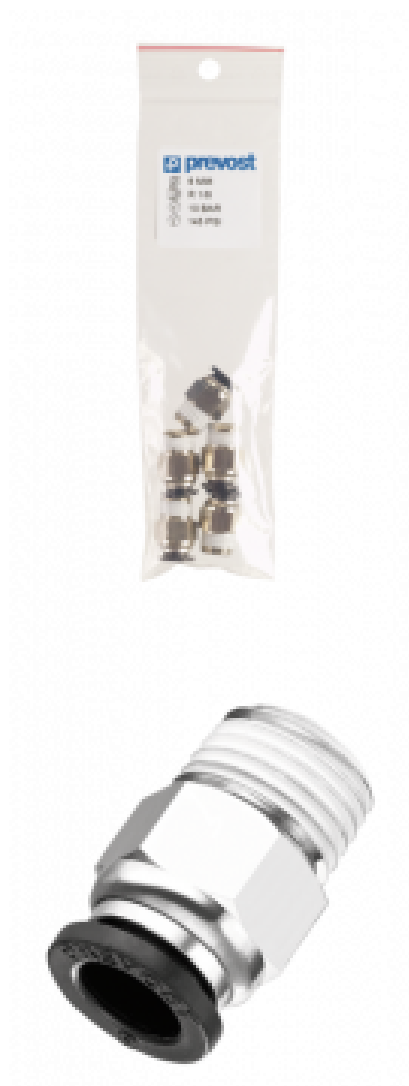


## Tapered male thread straight adaptor - RPD MR



### Quantity

5

### BSPT male thread

R 1/8

### For tube OD (mm)

6

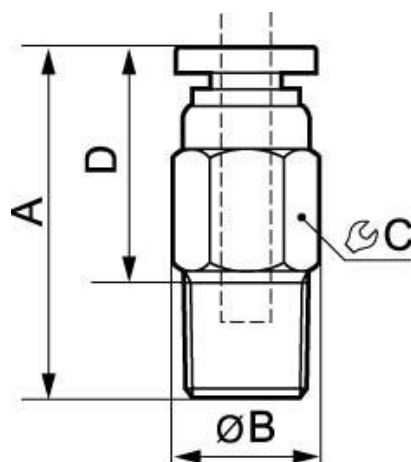
### Operating pressure

0 to 10 bar

### Construction

Polymer and nickel-plated  
brass

| Description |          |                  |                  |
|-------------|----------|------------------|------------------|
| Reference   | Quantity | BSPT male thread | For tube OD (mm) |
| RPD MR0600P | 5        | R 1/8            | 6                |
| RPD MR0601P | 5        | R 1/4            | 6                |
| RPD MR0800P | 5        | R 1/8            | 8                |
| RPD MR0801P | 5        | R 1/4            | 8                |
| RPD MR0802P | 5        | R 3/8            | 8                |
| RPD MR1001P | 5        | R 1/4            | 10               |
| RPD MR1002P | 5        | R 3/8            | 10               |



| Dimensions |                    |
|------------|--------------------|
| Reference  |                    |
|            | <b>RPD MR0600P</b> |
|            | <b>RPD MR0601P</b> |
|            | <b>RPD MR0800P</b> |
|            | <b>RPD MR0801P</b> |
|            | <b>RPD MR0802P</b> |
|            | <b>RPD MR1001P</b> |
|            | <b>RPD MR1002P</b> |